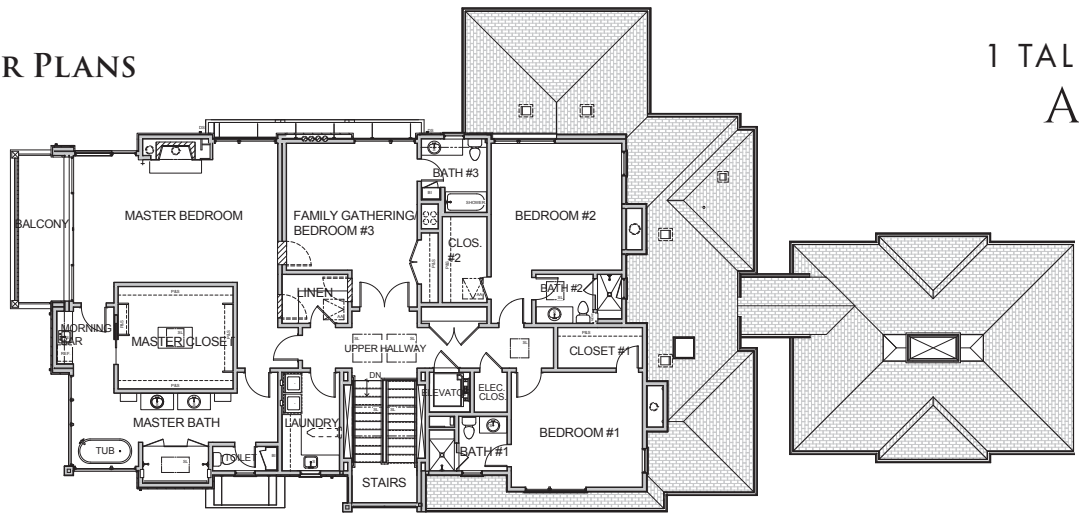
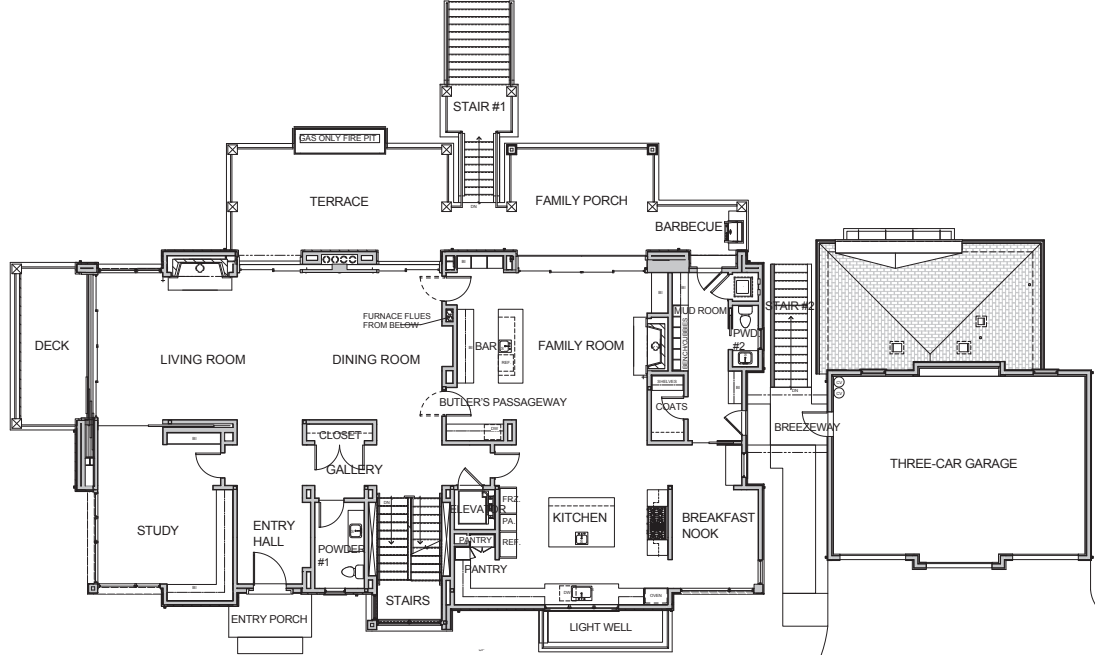


FLOOR PLANS

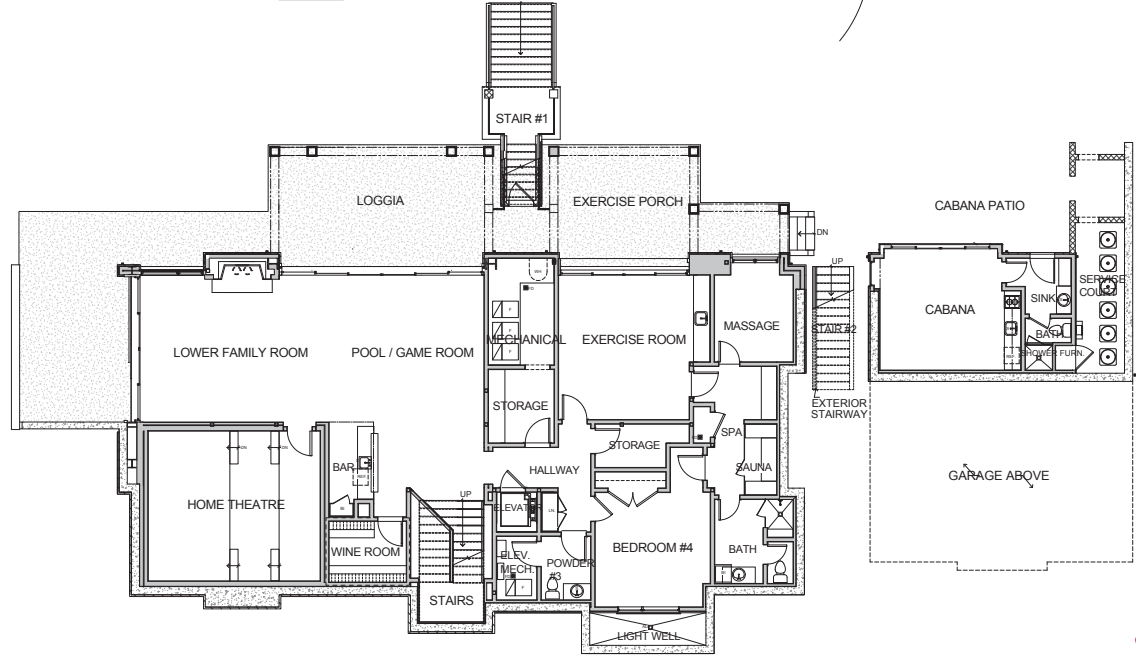
1 TALLWOOD COURT
ATHERTON



UPPER LEVEL



MAIN LEVEL



LOWER LEVEL



COURTNEY CHARNEY

650.773.3758
DRE# 01756013

COURTNEY@COURTNEYCHARNEY.COM
WWW.COURTNEYCHARNEY.COM

parc
AGENCY

Square footage and/or acreage information contained herein has been received from seller, existing reports, appraisals, public records and/or other sources deemed reliable. However, neither seller nor listing agent has verified this information. If this information is important to buyer in determining whether to buy or the purchase price, buyer should conduct buyer's own investigation. ©Marketing Designs, Inc. 650.802.0888 / marketingdesigns.net

PRIVATE OASIS

1 TALLWOOD COURT
ATHERTON

FEATURES OF THE HOME

This stunning contemporary home was designed and built by esteemed local developer Pacific Peninsula Group (PPG) in 2015 and sits on a beautiful oak-studded lot providing ultimate privacy. The floor-to-ceiling windows capture the incredible western hill views. Designed for both entertaining and everyday living, this home offers three levels of indoor/outdoor living.

11,199-square-foot home

- Main level: 3,504 square feet
- Upper level: 3,031 square feet
- Lower level: 3,504 square feet
- Guest house: 402 square feet
- Garage: 758 square feet

5 bedrooms

- Primary bedroom plus three additional on the upper level and one bedroom on the lower level

5 full bathrooms and 3 half-bathrooms

- 2 half-bathrooms on the main level
- 4 full bathrooms on the upper level
- 1.5 bathrooms on lower level

1-bedroom, 1-bath guest house

1-acre lot

MAIN LEVEL

Natural stone entry floor leads you to the main artery of the home. The great room has expansive windows with incredible treetop views. This multi-purpose room features two dramatic patios. The living room portion of this space has a gas fireplace and the dining portion is expansive enough for large gatherings and conveniently located near the kitchen.

- **Main-level office** with built-in bookshelves. This room has pocket doors to the living room, offering versatility of use
- **Formal powder room** with marble vanity and sconces built into the vanity
- **The kitchen/family room** offers a chef's kitchen. The kitchen has a Wolf range with double ovens and six burners. Other appliances include 2 Miele dishwashers, two Sub-Zero refrigerators and 4 Sub-Zero refrigerator drawers. A Wolf microwave is conveniently located near the pantry
- **The family room** has a gas fireplace as well as doors leading to a patio and the exterior. A built-in bar serves as a fantastic space for a quick beverage or an entertaining surface. This area has a Sub-Zero undercounter wine refrigerator, beverage refrigerator, and a bar sink. A dining nook is separated by a wall, but is just adjacent to the kitchen, making casual dining very easy
- **Mudroom** with a washer and dryer and convenient storage along with an informal powder room is located just off the side entrance of the home, and near the garage, making for ease of everyday living

UPPER LEVEL

The light-filled staircase leading to the upper level is a very bright entrance to the bedroom. This level offers a primary suite as well as three additional bedrooms.

- **The primary suite** has a gas fireplace and two walls of windows. This space also has an inviting outdoor patio. A coffee bar leads to the closet and bathroom area. The coffee bar has two Sub-Zero refrigerator drawers. The closet has extensive shelving as well as drapery to present a very sleek look. The **marble bathroom** has a freestanding bathtub, a walk-in shower with two different showerheads, and double vanities. Additional built-in storage makes this primary suite an ideal retreat
- **Additional 3 bedrooms** are all spacious and have **en suite bathrooms** and built-out closets. One bedroom has a shower over the bathtub and the others offer a shower
- **Laundry room** has two sets of full-sized laundry machines and extensive built-in cabinetry and a sink
- The upper level also has a **walk-in linen closet** and **two large hall closets**

LOWER LEVEL

The lower level was designed with form and function in mind. The basement is a true 'lower level' and is at the same grade as the pool and grass areas, and multiple doors open to give you access to these areas.

- **The lower-level great room** has a fireplace and seating area, as well as a sink, refrigerator and freezer drawers. An adjacent wine cellar has its own temperature control
- **Theatre** with screen and couch seating
- **Powder room** with wallpaper and marble vanity
- **Guest bedroom** with attached full bathroom and irrigated living wall in light well
- **Exercise room** gym flooring, sink, refrigerator and freezer drawers, built-in cabinetry, sauna and adjacent room ideal as a treatment room

EXTERIOR

Acclaimed landscape architect Pamela Burton designed the incredible grounds to create privacy as well as different options for relaxing, playing, and entertaining. The 'upper patios' off the home serve as gathering places to relax and dine off all the major public rooms. A dining area with adjacent built-in barbecue is off the family room and kitchen area. A large staircase leads to the lower level of the yard which has a field for playing, a pool and spa with fountain, different lounging areas, a loggia and an exercise porch. A guest house/cabana adds an additional amenity to the exterior and features a bar area with a sink and refrigerator and freezer drawers.

OTHER FEATURES OF THE HOME

- Control 4 Home Automation
- Elevator servicing all floors
- 3-car garage and automatic gated entry
- Landscape lighting
- Security cameras and back-up generator
- Automated shades in some rooms